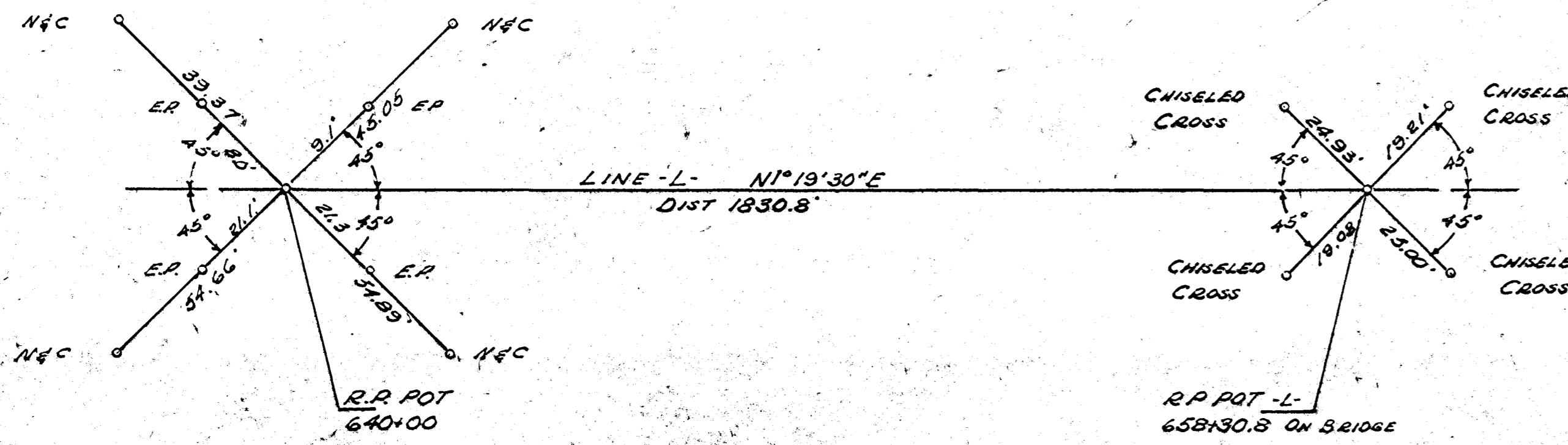
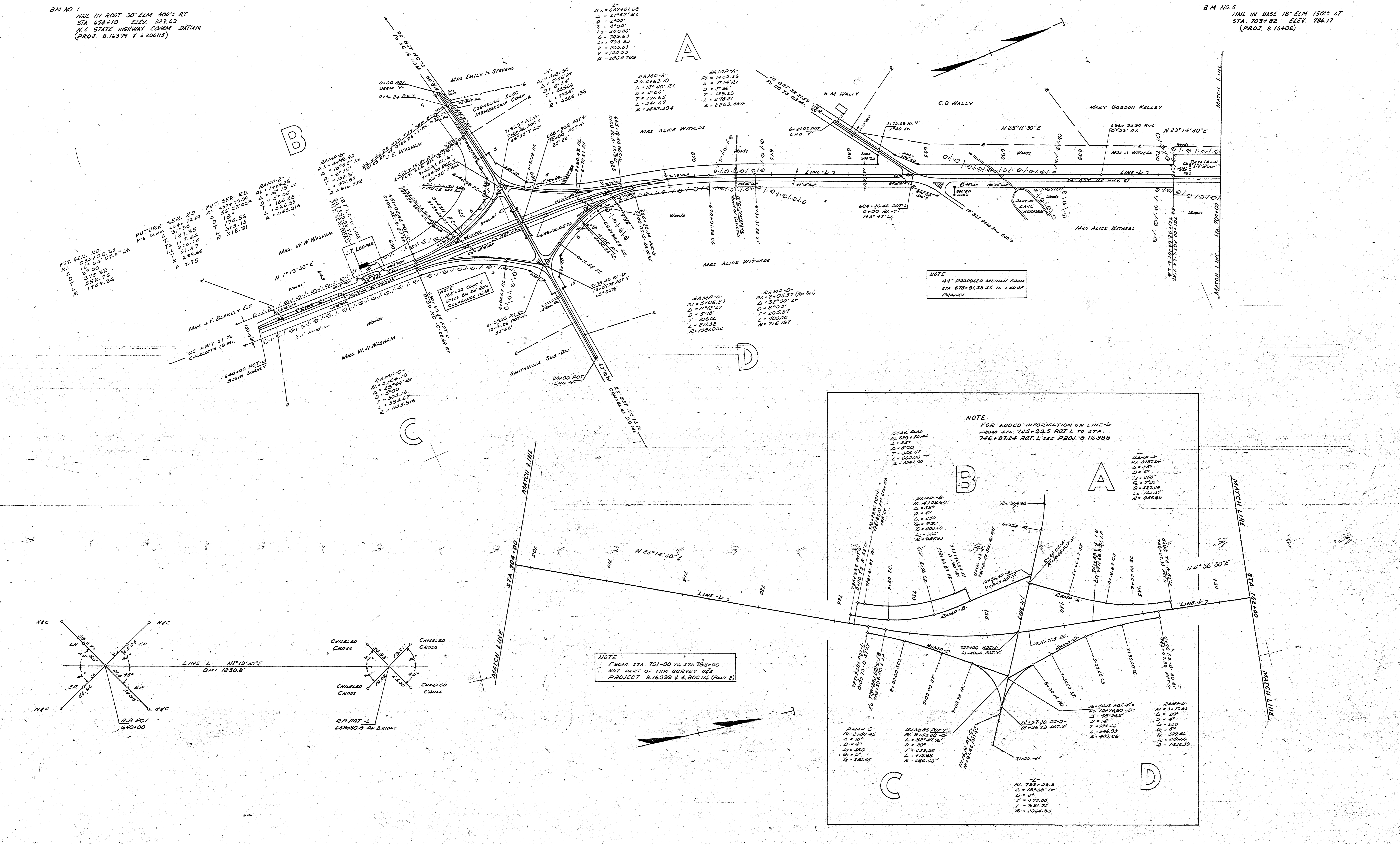


BM NO. 1
NAIL IN ROOT 30" ELM 400' RT
STA. 658+10 ELEV. 823.43
N.C. STATE HIGHWAY COMM. DATUM
(PROJ. 8.16399 & 6.800115)

B.M. NO. 5
NAIL IN BASE 18" ELM 150' LT
STA. 703+82 ELEV. 704.17
(PROJ. 8.16408)

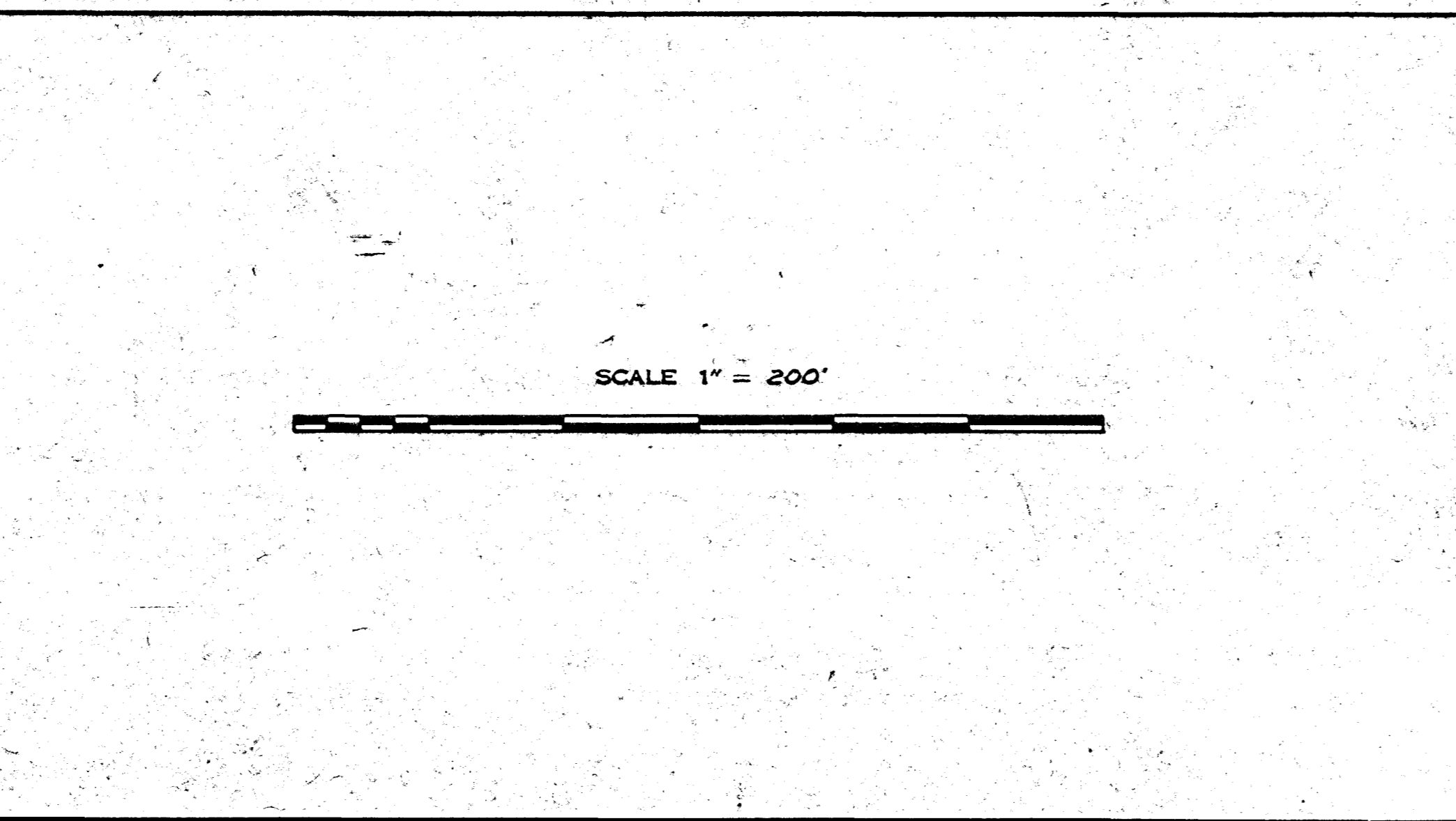


LEGEND

- 1 STORY DWELLING
- 2 STORY DWELLING
- BUSINESS
- COMB. BUSINESS & DWELLING
- BARN, GARAGE, STORAGE
- SCHOOL
- CHURCH
- CEMETERY
- PAVED ROAD
- SOIL ROAD
- RAIL ROAD
- PROPERTY LINE
- CITY LIMIT LINE
- COUNTY LINE
- WOODS
- WATER COURSE
- TRAFFIC COUNT
- PIPE OR CULVERT
- BRIDGE
- N/M MONUMENT

UTILITIES

CORNELIUS ELEC. MEMBERSHIP CORR.
SOUTHERN BELL TEL AND TEL CO.
DUKE POWER CO.
MOOREVILLE TELEPHONE CO.
H.A. ALEXANDER
TOWN OF DAVIDSON, N.C.
TRANSCONTINENTAL GAS CORP.
PIEDMONT NATURAL GAS CO.



DETAIL MAP

PROJECT 8.16408 MECK-IREDELL COUNTY ROUTE I-77
BETWEEN STA 640 1830' S OF NC 73 N TO STA 701
AND FROM STA 793 TO STA 1093+35.13 N OF NC 150

STATE HIGHWAY COMMISSION
RALEIGH, NORTH CAROLINA

STATE LOCATING ENGINEER

SURVEYED BY E.D. BOHRBAUGH DRAWN BY E.D. BOHRBAUGH CHECKED BY D.P. WILSON
DATE OF SURVEY APR - AUG 1963 SHEET NO. 1 OF 4