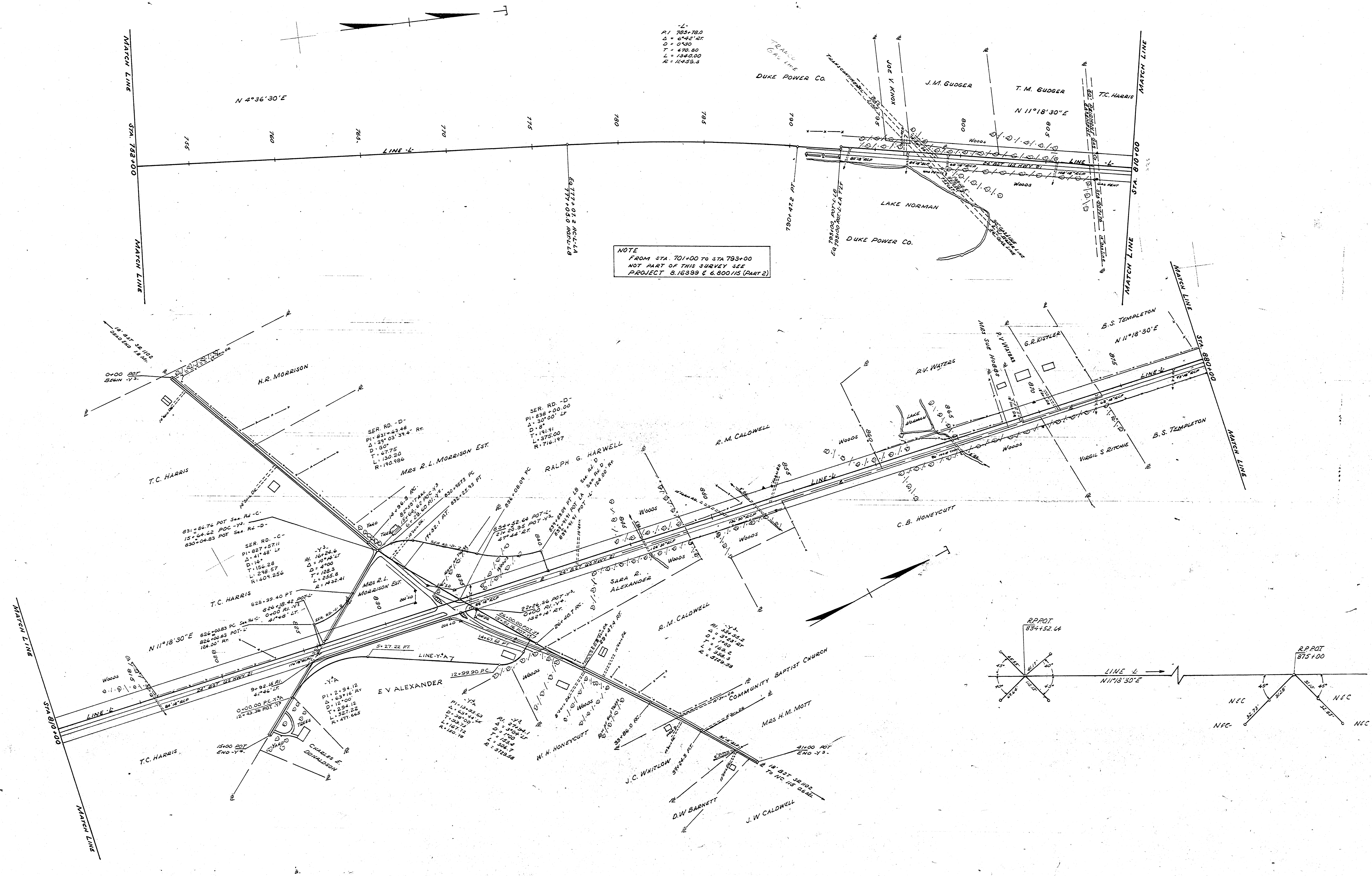
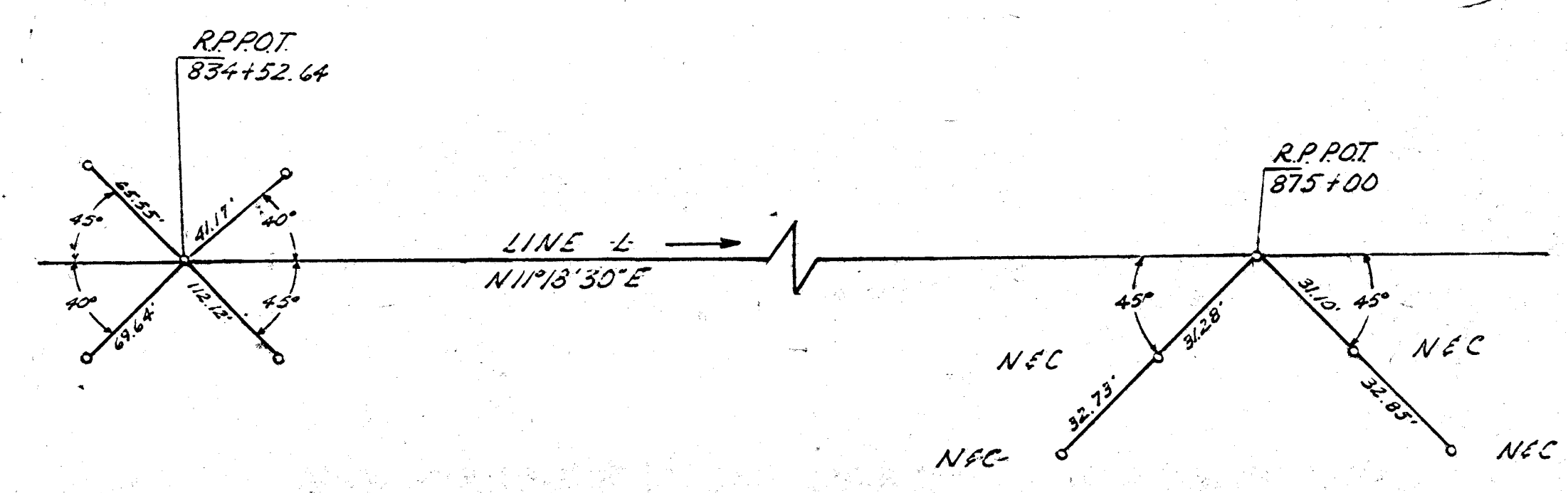


BM NO. 8
NAIL IN ROOT 12" PINE STUMP 100' RT.
STA. 8014.65 ELEV. 783.23
(SAME AS BM NO. 10 - PROJ. 6.800115)

BM NO. 12
3 NAILS IN BASE 10" PINE 120' RT.
STA. 8714.51 ELEV. 783.14
(PROJ. 8.16408)



NOTE
FROM STA. 701+00 TO STA. 793+00
NOT PART OF THIS SURVEY SEE
PROJECT 8.16399 & 6.800115 (PART 2)

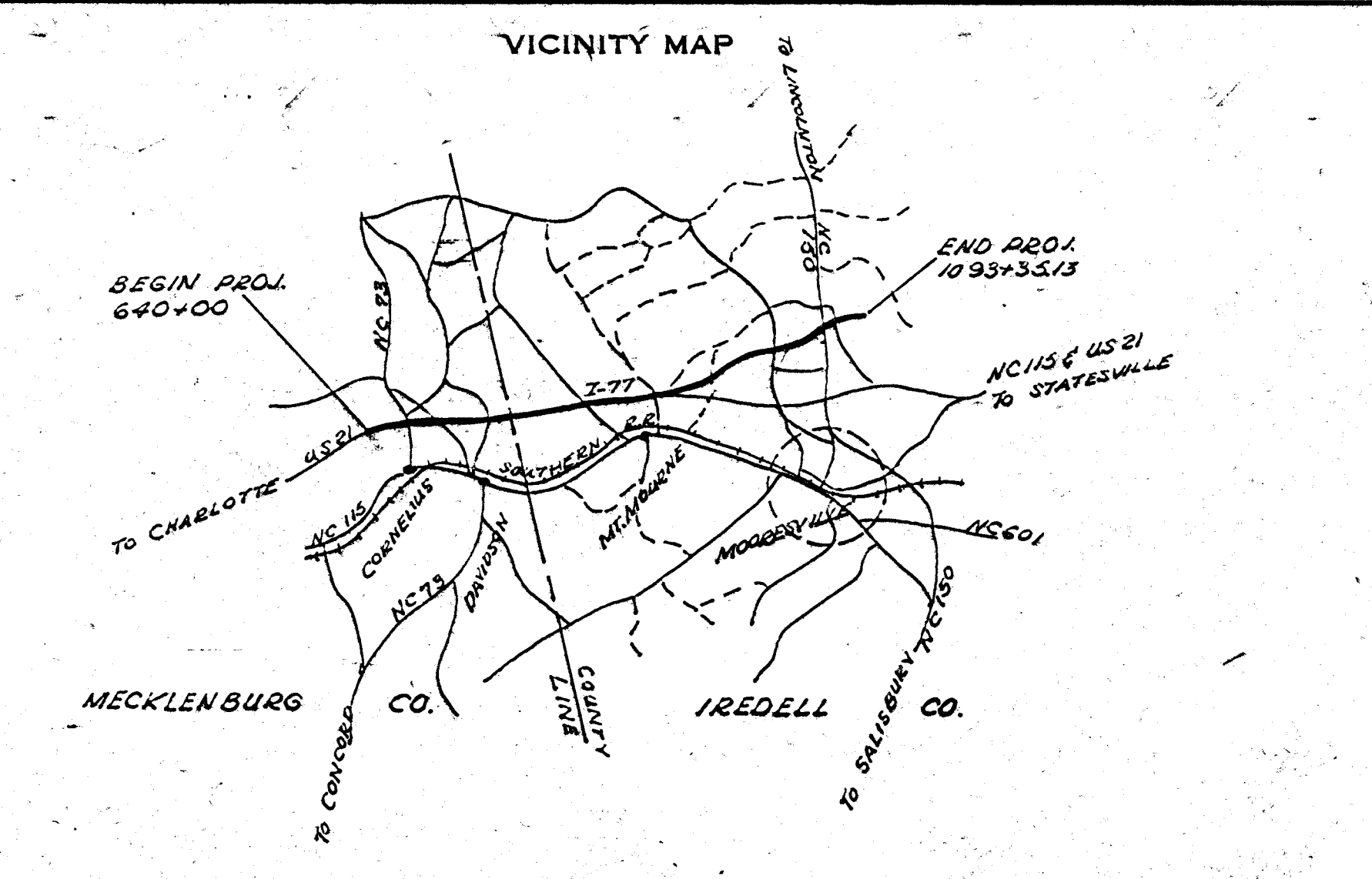
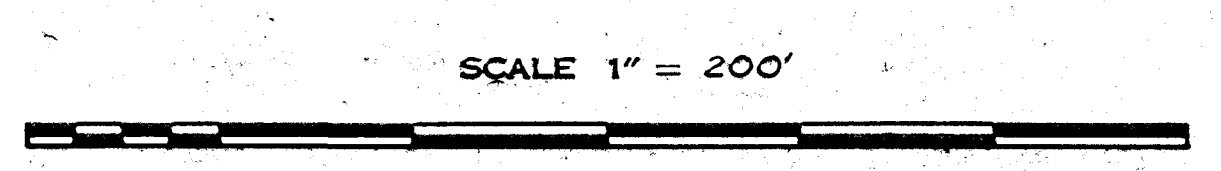


LEGEND

1 STORY DWELLING	[Symbol]
2 STORY DWELLING	[Symbol]
BUSINESS	[Symbol]
COMB. BUSINESS & DWELLING	[Symbol]
BARN, GARAGE, STORAGE	[Symbol]
SCHOOL	[Symbol]
CHURCH	[Symbol]
CEMETERY	[Symbol]
PAVED ROAD	[Symbol]
SOIL ROAD	[Symbol]
RAIL ROAD	[Symbol]
PROPERTY LINE	[Symbol]
CITY LIMIT LINE	[Symbol]
COUNTY LINE	[Symbol]
WOODS	[Symbol]
WATER COURSE	[Symbol]
TRAFFIC COUNT	[Symbol]
PIPE OR CULVERT	[Symbol]
BRIDGE	[Symbol]
2 1/2" MONUMENT	[Symbol]

UTILITIES

CORNELIUS ELEC. MEMBERSHIP CORP.
SOUTHERN BELL TEL AND TEL CO.
DUKE POWER CO.
WOODSVILLE TELEPHONE CO.
H. A. ALEXANDER
TOWN OF DAVIDSON, N.C.
TRANSCONTINENTAL GAS CORP.
REIDMONT NATURAL GAS CO.



DETAIL MAP

PROJECT 816408 MECK-IREDELL COUNTY ROUTE I-77
BETWEEN STA. 640 1830' S OF NC 73 N TO STA. 701
AND FROM STA. 793 TO STA. 1093+35.13 N OF NC 150

STATE HIGHWAY COMMISSION
RALEIGH, NORTH CAROLINA

STATE LOCATING ENGINEER

SURVEYED BY ED. BOHRBAUGH DRAWN BY ED. BOHRBAUGH CHECKED BY D.E. WILSON
DATE OF SURVEY APR - AUG, 1963 SHEET NO. 2 OF 4