

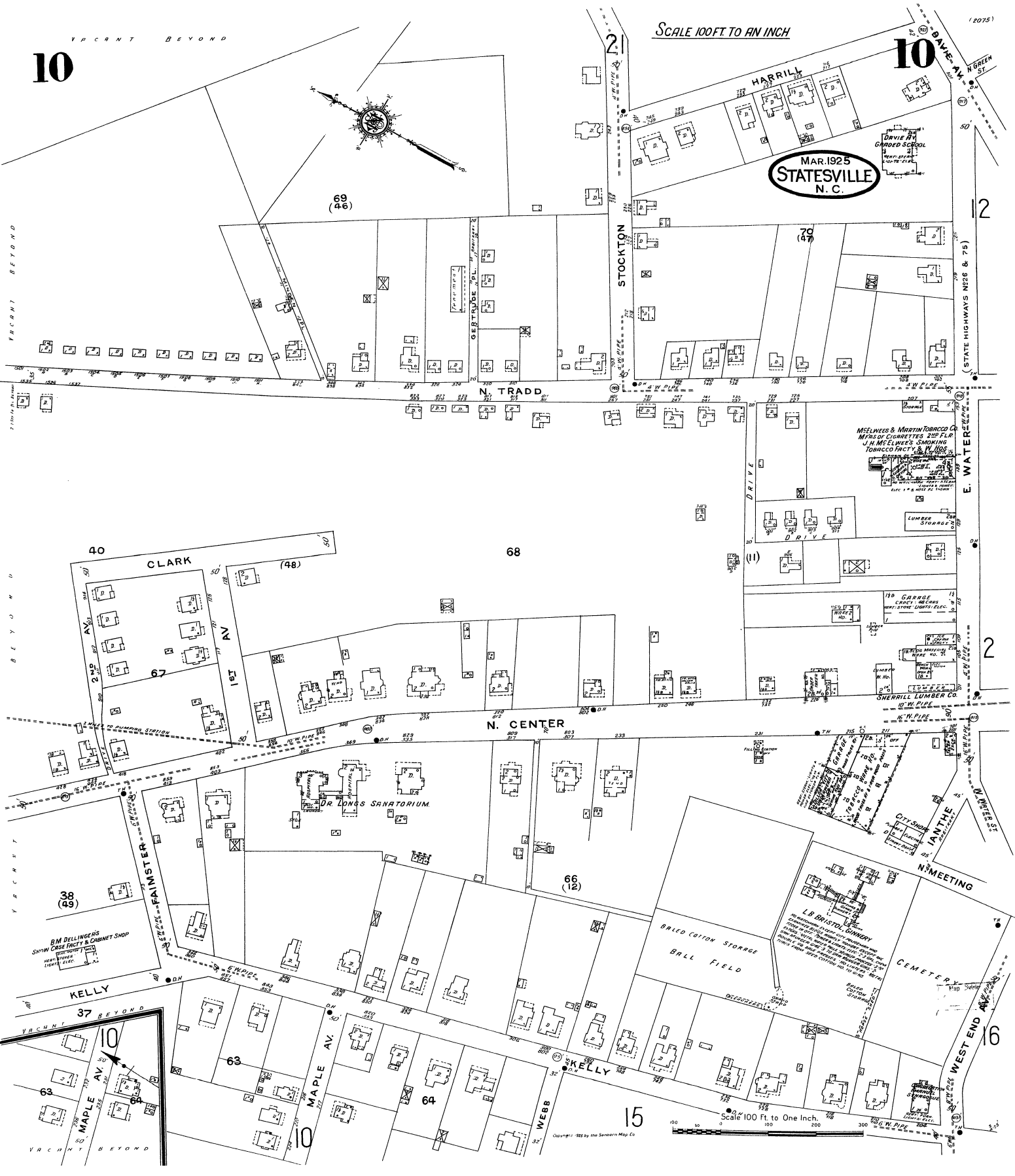
10

VACANT BEYOND

SCALE 100 FT. TO AN INCH

10

(2075)



MAR. 1925
STATESVILLE
 N. C.

69
(26)

70
(47)

12

(STATE HIGHWAYS N226 & 75)

N. TRADD

40

CLARK

187 AV

68

N. CENTER

38
(29)

DR. LONG'S SANATORIUM

66
(12)

L.B. BRISTOL'S GINNEY
 BRISTOL'S GINNEY
 BRISTOL'S GINNEY
 BRISTOL'S GINNEY

BRID COTTON STORAGE
 BALL FIELD

CEMETERY

KELLY

KELLY

15

Scale 100 Ft. to One Inch.

16

WEST END AV

37 BEYOND

MAPLE AV

VACANT BEYOND

Copyright 1925 by the Standard Map Co.